

Kenton C. Ward, CFM
Surveyor of Hamilton County
Phone (317) 776-8495
Fax (317) 776-9628

Suite 188
One Hamilton County Square
Noblesville, Indiana 46060-2230

Map Correction-Field Verification

Drain Number: 315

Drain Length: 3654

Drain Name: Centennial South Phase 2

Change +/- : -223

Date: 7-15-2013

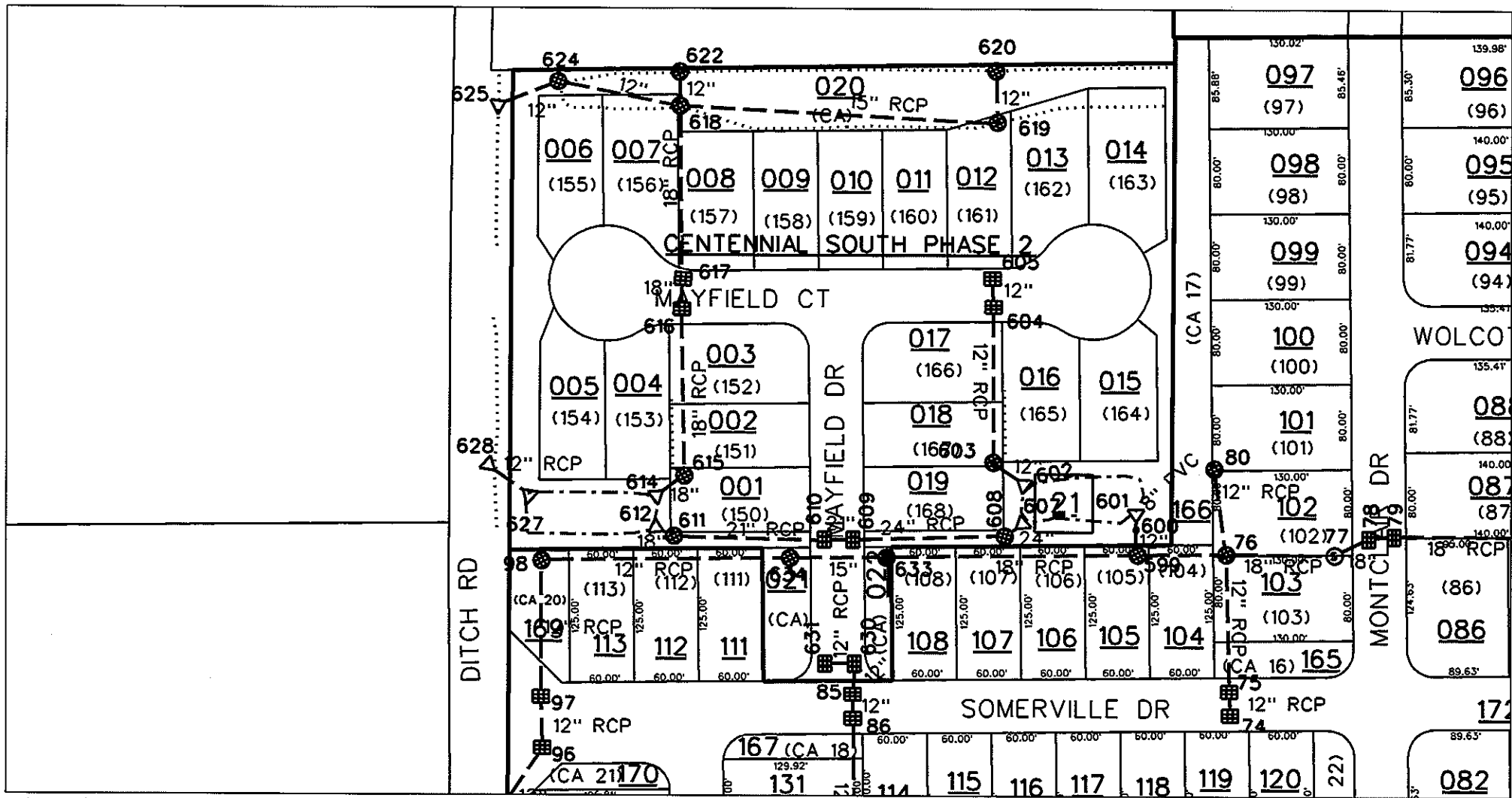
New Length: 3431

Verified By: SLM

Notes & Sketch:

The SSD was improperly mapped under the curbs. The SSD under the curbs were not outlined as part of the regulated drain. The SSD outlined in the report were those in the common area and in the rear of lots 152-151 and 166-167. Therefore, the length of SSD was shortened from 1898 feet to 1675 feet.

Suzanne L. Mills
GIS Specialist



sub_rg_drn.dgn 7/15/2013 11:27:54 AM



SURVEYOR'S OFFICE

Hamilton County

Kenton C. Ward, CFM
Surveyor of Hamilton County
 Phone (317) 776-8495
 Fax (317) 776-9628

Suite 188
One Hamilton County Square
Noblesville, Indiana 46060-2230

September 1, 2009

TO: Hamilton County Drainage Board

RE: Williams Creek Drain, Centennial South Phase 2 Arm

Attached is a petition filed by Estridge Development Company along with a non-enforcement request, plans, calculations, quantity summary and assessment roll for the Centennial South Phase 2 Arm, Williams Creek Drain to be located in Washington Township. I have reviewed the submittals and petition and have found each to be in proper form.

I have made a personal inspection of the land described in the petition. Upon doing so, I believe that the drain is practicable, will improve the public health, benefit a public highway, and be of public utility and that the costs, damages and expenses of the proposed drain will probably be less than the benefits accruing to the owners of land likely to be benefited. The drain will consist of the following:

8" PVC	13 ft.	21" RCP	167 ft.
12" RCP	623 ft.	24" RCP	168 ft.
15" RCP	388 ft.	6" SSD	1830 ft.
18" RCP	406 ft.		

The total length of the drain will be 3595 feet.

This section will remove Str. 84 (per the Centennial South As-built drawings), 47 feet of 18" RCP, and 45 feet of 12" RCP from the Williams Creek Centennial South Arm. This pipe is being replaced with Str. 633, Str. 634, and 92 feet of 15" RCP, which is included in the footages above for this arm.

The dry detention basins (Basins 1 & 2) located in Common Area #1 and #2 are to be considered part of the regulated drain. Basin maintenance shall include the inlet, outlet, sediment removal and erosion control along the banks as part of the regulated drain. The maintenance of the Basins, such as mowing and vegetation control, will be the responsibility of the Homeowners Association. The Board will also retain jurisdiction for ensuring the storage volume for which the Basins were designed will be retained, thereby, allowing no fill or easement encroachments.

The subsurface drains (SSD) under curbs are not to be part of the regulated drain. This is per the agreement between the developer, Estridge Development Company and the Hamilton County Commissioners on March 8, 1999. (See Commissioner's Minute Book 93, Pages 138-139). The subsurface drains (SSD) to be part of the regulated drain are those main lines located in rear yards. Laterals for individual lots will not be considered part of the regulated drain.

I have reviewed the plans and believe the drain will benefit each lot equally. Therefore, I recommend each lot be assessed equally. I also believe that no damages will result to landowners by the construction of this drain. I recommend a maintenance assessment of \$65.00 per platted lot, \$10.00 per acre for common areas, with a \$65.00 minimum, and \$10.00 per acre for roadways. With this assessment the total annual assessment for this drain/this section will be \$1,466.00.

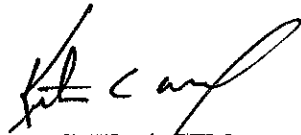
The petitioner has submitted surety for the proposed drain at this time. The sureties which are in the form of a Performance Bond are as follows:

Agent: The Ohio Casualty Insurance Company
Date: August 12, 2009
Number: 5058933
For: Storm Sewers & Sub-Surface Drains
Amount: \$126,694.80

I believe this proposed drain meets the requirements for Urban Drain Classification as set out in IC 36-9-27-67 to 69. Therefore, this drain shall be designated as an Urban Drain.

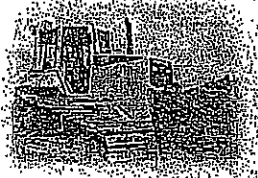
I recommend that upon approval of the above proposed drain that the Board also approve the attached non-enforcement request. The request is for the reduction of the regulated drain easement to those easement widths as shown on the secondary plat for Centennial South Phase 2 as recorded in the office of the Hamilton County Recorder.

I recommend the Board set a hearing for this proposed drain for October 26, 2009.



Kenton C. Ward, CFM
Hamilton County Surveyor

KCW/pll



HARVEY CONSTRUCTION CO., INC.
 9125 E. 146TH Street; Noblesville, IN 46060
 (317) 773-7302 Fax (317) 773-7565

Project: Centennial South Expansion
Proposal to: Estridge Development Co. ; Mr. Chad Handley
Address: 14300 Clay Terrace; Carmel, IN 46032
Engineer: Schneider Engineering
Date of Plans: 02/02/2009 Proposal Date: 02/26/2009

We hereby submit specifications and estimates for:

Earthwork	\$ 33,000
Sanitary Sewers	73,964
Storm Sewers	89,579
Subsurface Drains	31,675
Water	64,461
Construction Entry (1)	3,000
Demolition	23,500
Tree Removal	<u>7,500</u>
Total:	\$ 326,679

Please note: *Maintenance Bonds* 950.00

- No Soil Stabilization Included.
- No excessive dewatering included.
- No soil erosion control or seeding/sodding included. Emergency access drive/grass pavers not included.
- Any cleaning of sewers caused by erosion control not in place will be at owners cost.
- No sales tax included, tax exempt certificate required.
- Maintenance bonds not included. If required, they are to be an extra, charged at our cost.
- Milling of intersection by others.
- One construction entrance included. Each additional entrance add \$3,000.00.
- No staging area included, none shown on plans.
- Televising included for storm, sanitary sewer and subsurface drain.
- Two well removals included in demolition price. Each additional well add \$1,100 to price.

We purpose hereby to furnish material and labor-complete in accordance with the above specifications, for the sum of
Three Hundred Twenty-six Thousand Six Hundred Seventy-nine and 00/100 dollars. (\$ 326,679.00)

Payment to be made as follows: Monthly estimates billed on the 30th, payment due on the 10th.

TERMS: NET AS PER CONTRACT AGREEMENT If your account is not paid in full when due, a FINANCE CHARGE, computed by the PERIODIC RATE of 1.5% per month, which is an ANNUAL PERCENTAGE RATE of 18% will be imposed on the past-due balance on the due date.

All material is guaranteed to be as specified. All work to be complete in a workmanlike manner according to standard practices. Any alteration or deviation from above specifications involving extra costs will be executed only upon written orders, and will become an extra charge over and above the estimate. All agreements contingent upon strikes, accidents or delays beyond our control. Owner to carry fire, tornado and other necessary insurance. Our workers are fully covered by Workman's Compensation Insurance.

Authorized Signature: *Brock Avery*
Brock Avery, Estimator

STATE OF INDIANA)
)
COUNTY OF HAMILTON)

TO: HAMILTON COUNTY DRAINAGE BOARD

% Hamilton County Surveyor
One Hamilton County Square, Suite 188
Noblesville, IN. 46060-2230

In the matter of _____ Centennial South _____ Subdivision, Section
Phase II _____ Drain Petition.

Petitioner is the owner of all lots in the land affected by the proposed new regulated drain. The drainage will affect various lots in _____ Centennial South _____, a subdivision in Hamilton County, Indiana. The general route of such drainage shall be in existing easements and along public roads as shown in the plans on file in the Surveyor's Office.

Petitioner believes that the cost, damages and expenses of the proposed improvement will be less than the benefits which will result to the owners of the land likely to be benefited thereby. Petitioner believes the proposed improvements will:

- (a) improve public health
- (b) benefit a public street
- (c) be of public utility

Petitioner agrees to pay the cost of construction of the drainage system and requests periodic maintenance assessments by the Board thereafter.

The Petitioner also agrees to the following:

1. To provide the Drainage Board a Performance Bond or Non-Revocable Letter of Credit for the portion of the drainage system which will be made a regulated drain. The bond will be in the amount of 120% of the Engineer's estimate. The bond will be in effect until construction of 100% of the system is completed and so certified by the Engineer.
2. The Petitioner shall retain an Engineer throughout the construction phase. At completion of the project the Petitioner's Engineer shall certify that the drainage system which is to be maintained as a regulated drain has been constructed as per construction plans.
3. The Petitioner agrees to request in writing to the County Surveyor any changes from the approved plan and must receive written authorization from the County Surveyor prior to implementation of the change. All changes shall be documented and given to the Surveyor to be placed in the Drain file.
4. The Petitioner shall instruct his Engineer to provide a reproducible print on a 24" x 36" Mylar of the final design of the Drainage System. This shall be submitted to the County Surveyor prior to the release of the Performance Bond.
5. The Petitioner shall comply with the Erosion Control Plan as specified on the construction plans. Failure to comply with the Erosion Control Plan shall be determined by the Board as being an obstruction to the drainage system. The County Surveyor shall immediately install or repair the needed measures at Petitioners cost as per IC 36-9-27-46.

The Petitioner further requests that the Drain be classified as an Urban Drain as per IC 36-9-27-69(d).

RECORDED OWNER(S) OF LAND INVOLVED

Bryan D. Stumpf
Signed

BRYAN D. STUMPF
Printed Name

08.18.08
Date

Signed

Printed Name

Date

Signed

Printed Name

Date

Signed

Printed Name

Date

FINDINGS AND ORDER

CONCERNING THE PARTIAL VACATION OF THE

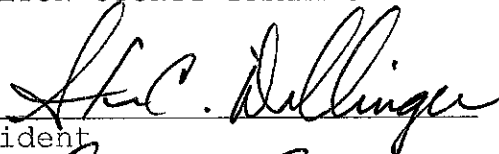
Williams Creek Drain, Centennial South Phase 2 Arm

**Str. 84, 47' of 18" RCP and 45' of 12" RCP
(per Centennial South asbuilt drawings)**

On this **26th day of October 2009**, the Hamilton County Drainage Board has held a hearing on the Maintenance Report and Schedule of Assessments of the **Williams Creek Drain, Str. 84, 47' of 18" RCP and 45' of 12" RCP (per Centennial South asbuilt drawings)**.

Evidence has been heard. Objections were presented and considered. The Board then adopted an order of action. The Board now finds that the costs of continued maintenance to the portion of the above drain exceed the benefits to the real estate benefited by the portion of the drain to be abandoned and issues this order vacating the above section of the **Williams Creek Drain, Str. 84, 47' of 18" RCP and 45' of 12" RCP (per Centennial South asbuilt drawings)**.

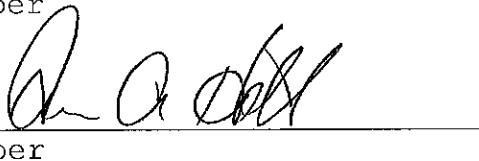
HAMILTON COUNTY DRAINAGE BOARD



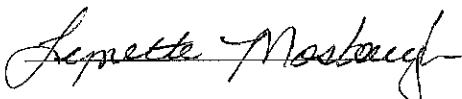
President



Member



Member

Attest: 

FINDINGS AND ORDER

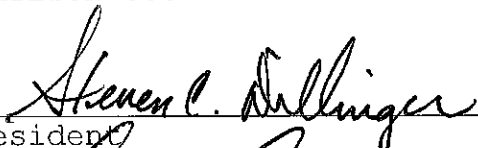
CONCERNING THE MAINTENANCE OF THE

Williams Creek Drain, Centennial South Phase 2


On this 26th day of October 2009, the Hamilton County Drainage Board has held a hearing on the Maintenance Report and Schedule of Assessments of the **Williams Creek Drain, Centennial South Phase 2**.

Evidence has been heard. Objections were presented and considered. The Board then adopted the original/amended Schedule of Assessments. The Board now finds that the annual maintenance assessment will be less than the benefits to the landowners and issues this order declaring that this Maintenance Fund be established.

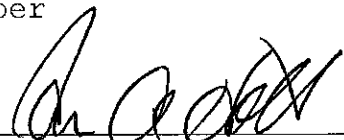
HAMILTON COUNTY DRAINAGE BOARD



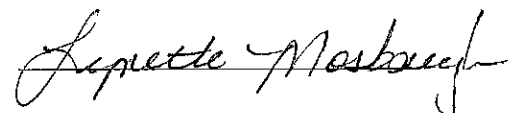
President



Member



Member

Attest: 

BEFORE THE HAMILTON COUNTY DRAINAGE BOARD
IN THE MATTER OF

Williams Creek Drainage Area, Centennial South Phase 2 Arm

NOTICE

To Whom It May Concern and: _____

Notice is hereby given of the hearing of the Hamilton County Drainage Board on the **Williams Creek Drainage Area, Centennial South Phase 2 Arm** on **October 26, 2009** at **9:15 A.M.** in Commissioners Court, Hamilton County Judicial Center, One Hamilton County Square, Noblesville, Indiana, and which construction and maintenance reports of the Surveyor and the Schedule of Assessments made by the Drainage Board have been filed and are available for public inspection in the office of the Hamilton County Surveyor.

Hamilton County Drainage Board

Attest: Lynette Mosbaugh

ONE TIME ONLY

BEFORE THE HAMILTON COUNTY DRAINAGE BOARD
IN THE MATTER OF THE

Williams Creek Drainage Area, Centennial South Phase 2
NOTICE

Notice is hereby given pursuant to Section 405 of the 1965 Indiana Drainage Code that this Board, prior to final adjournment on **October 26, 2009** has issued an order adopting the Schedule of Assessments, filed the same and made public announcement thereof at the hearing and ordered publication. If judicial review of the findings and order of the Board is not requested pursuant to Article Eight of this code within twenty (20) days from the date of this publication, the order shall be conclusive.

Hamilton County Drainage Board

Attest: Lynette Mosbaugh

ONE TIME ONLY



K.C.W.

SURVEYOR'S OFFICE
Hamilton County

Kenton C. Ward, CFM
Surveyor of Hamilton County
Phone (317) 776-8495
Fax (317) 776-9628

Suite 188
One Hamilton County Square
Noblesville, Indiana 46060-2230

To: Hamilton County Drainage Board

August 15, 2012

Re: Williams Creek: Centennial South Phase 2

Attached are as-builts, certificate of completion & compliance, and other information for Centennial South Phase 2. An inspection of the drainage facilities for this section has been made and the facilities were found to be complete and acceptable.

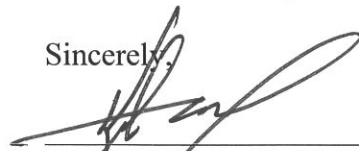
During construction, changes were made to the drain, which will alter the plans submitted with my report for this drain-dated September 1, 2009. The report was approved by the Board at the hearing held October 26, 2009. (See Drainage Board Minutes Book 12, Pages 311-312) The changes are as follows:
The 12" RCP was shortened from 623 feet to 598 feet. The 15" RCP was shortened from 388 feet to 386 feet. The 18" RCP was shortened from 406 feet to 403 feet. The 24" RCP was lengthened from 168 feet to 189 feet. The 6" SSD was lengthened from 1830 feet to 1898 feet. The length of the drain due to the changes described above is now **3,654 feet**.

The non-enforcement was approved by the Board at its meeting on October 26, 2009 and recorded under instrument #20100020992. The following sureties were guaranteed by the Ohio Casualty Company and released by the Board on its August 22, 2011 meeting.

Bond-LC No: 5058933
Insured For: Storm Sewers
Amount: \$126,694.80
Issue Date: August 12, 2009

I recommend the Board approve the drain's construction as complete and acceptable.

Sincerely,



Kenton C. Ward, CFM
Hamilton County Surveyor

KCW/slm

CERTIFICATION FOR "RECORD DRAWING"

CERTIFIED BY: *David K. Sexton*

DAVID K. SEXTON
REGISTERED
No. 9500028
STATE OF INDIANA
PROFESSIONAL ENGINEER
DATE: 12/00/09

SCHEIDER ENGINEERING CORPORATION
HISTORIC FORT HARRISON
8901 OTIS AVENUE
INDIANAPOLIS, INDIANA 46216
(317) 826-7100 FAX (317) 826-7300

NOTE: Record drawing certification only for top of casting, invert elevations and lengths of pipe. Slope percentage represents a calculated figure and is for general information only.

BENCHMARK

BM - U.S.G.S. 93 RHP, BRASS DISK IN A CONCRETE POST AT THE SOUTHWEST CORNER OF 146TH STREET AND DITCH ROAD. ELEVATION = 903.373 (NGVD 1929)

TBM2 - CUT SQUARE ON TOP OF CONCRETE BASE AT THE NORTH SIDE OF CONCRETE FENCE POST, WEST SIDE OF DITCH ROAD, 1320± SOUTH OF 156TH STREET, ESTABLISHED FROM PREVIOUS JOB #753 (CENTENNIAL). ELEVATION = 916.99 (NGVD 1929)

TBM4 - RAILROAD SPIKE SET 1.0' UP IN THE SOUTH SIDE OF A UTILITY POLE ON THE WEST SIDE OF DITCH ROAD, 267' NORTH OF THE SOUTHWEST CORNER AND 180' SOUTH OF THE NORTHWEST CORNER OF THE SUBJECT TRACT. ELEVATION = 909.51 (NGVD 1929)

Sheet	Detail	Description
C804	D-23	Bedding Detail Reinforced Concrete Pipe (RCP)
C805	ST-11&12, CT-B	Roll Curb Inlet Detail
C805	ST-11&12, CT-10	Beehive Inlet Detail
C805	D-20	Storm Manhole Detail
C805	1	Precast Concrete End Section
C801		RipRap Detail @ End Section
C805	D-12	Debris Guard

LEGEND/DETAILS

NOTE

Indiana 811
Know what's below.
Call before you dig.

GENERAL NOTES

- TEMPORARY TRAFFIC CONTROL DURING CONSTRUCTION TO CONFORM TO APPLICABLE LOCAL AND STATE STANDARDS.
- ALL CONSTRUCTION ACTIVITY ON THIS SITE TO BE PERFORMED IN COMPLIANCE WITH APPLICABLE O.S.H.A. STANDARDS FOR WORKER SAFETY.
- IT SHALL BE THE CONTRACTOR'S RESPONSIBILITY TO FIELD VERIFY ALL UTILITY LOCATIONS BEFORE CONSTRUCTION BEGINS.
- CONTRACTORS SHALL MINIMIZE DAMAGE TO EXISTING TREES.

REVISIONS:

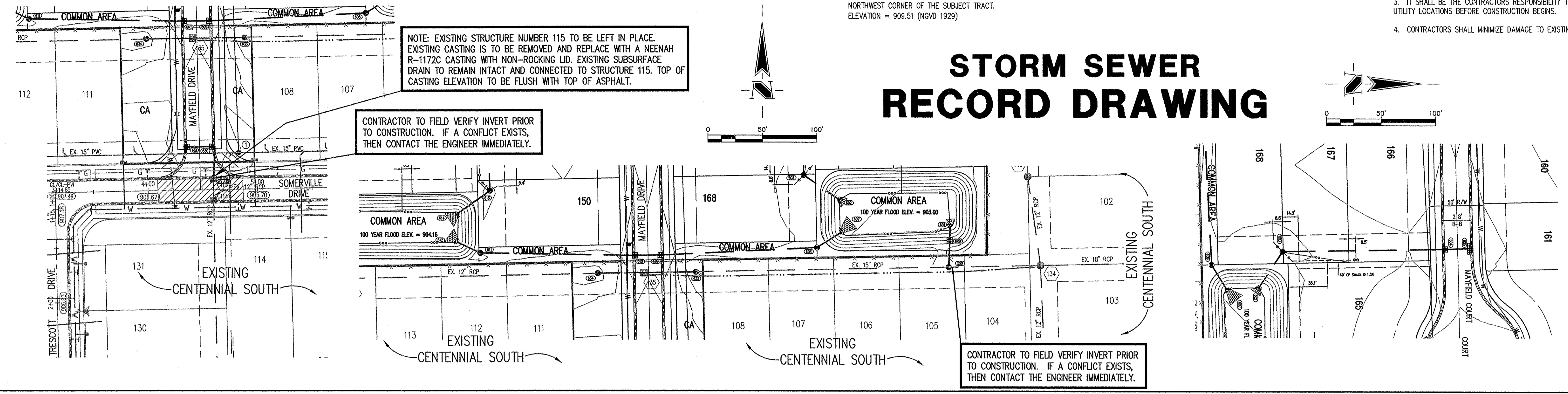
- DATE: 2/7/09, REVISION: PER THE COMMENTS, 2/7/09.
- DATE: 06/09/09, REVISION: PER THE COMMENTS, 06/09/09.
- DATE: 06/09/09, REVISION: PER THE COMMENTS, 06/09/09.
- DATE: 06/09/09, REVISION: PER THE COMMENTS, 06/09/09.
- DATE: 06/09/09, REVISION: PER THE COMMENTS, 06/09/09.

DATE: 06/09/09

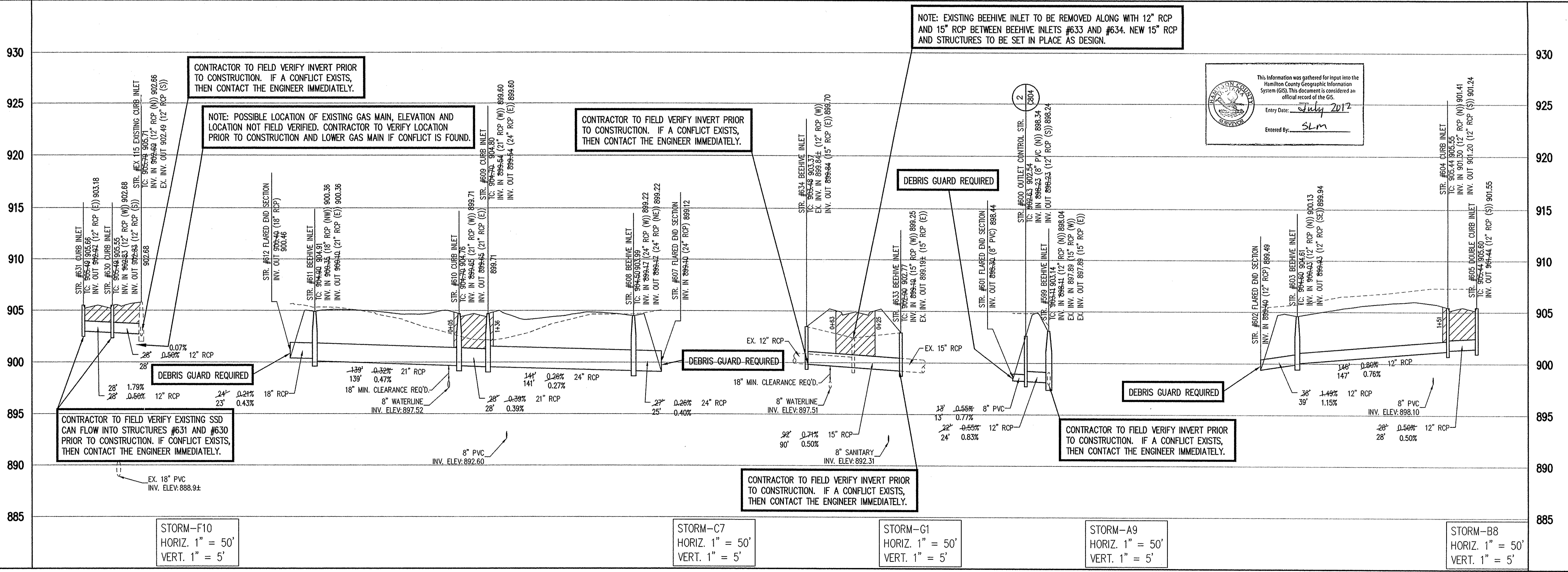
THIS DRAWING AND THE IDEAS, DESIGNS AND CONCEPTS CONTAINED HEREIN ARE THE EXCLUSIVE INTELLECTUAL PROPERTY OF THE SCHEIDER CORPORATION AND ARE NOT TO BE USED OR REPRODUCED, IN WHOLE OR IN PART, WITHOUT THE WRITTEN CONSENT OF THE SCHEIDER CORPORATION.

© COPYRIGHTED BY THE SCHEIDER CORP. (2009)

STORM SEWER RECORD DRAWING



STORM SEWER PLAN



Schneider

THE SCHEIDER CORPORATION
Historic Fort Harrison
8901 Otis Avenue
Indianapolis, IN 46216-1037
Telephone: 317.826.7100
Fax: 317.826.7300
www.schneidercorp.com

Architecture
Civil Engineering
Environmental Engineering
Geotechnical Services
GIS + LIS
Home Builder Services
Interior Design
Land Surveying
Landscape Architecture
Transportation Engineering

CENTENNIAL SOUTH
PHASE 2
WESTFIELD, INDIANA
ESTRIDGE DEVELOPMENT CO., INC.
CARMEL, INDIANA

DATE: 02/07/09	PROJECT NO.: 3915.004
DRAWN BY: DTR	CHECKED BY: SMD
SHEET TITLE: STORM SEWER PLAN & PROFILE	
DRAWING FILES: T:\3\3915\004\dwg\C601-C602.dwg XREF: T:\3\3915\004\dwg\T801.dwg XREF: T:\3\3915\004\dwg\004B.dwg XREF: T:\3\3915\004\dwg\004C.dwg XREF: T:\3\3915\004\dwg\004D.dwg XREF: T:\3\3915\004\dwg\004E.dwg XREF: T:\3\3915\004\dwg\004F.dwg XREF: T:\3\3915\004\dwg\004G.dwg XREF: T:\3\3915\004\dwg\004H.dwg XREF: T:\3\3915\004\dwg\004I.dwg XREF: T:\3\3915\004\dwg\004J.dwg XREF: T:\3\3915\004\dwg\004K.dwg XREF: T:\3\3915\004\dwg\004L.dwg XREF: T:\3\3915\004\dwg\004M.dwg XREF: T:\3\3915\004\dwg\004N.dwg XREF: T:\3\3915\004\dwg\004O.dwg XREF: T:\3\3915\004\dwg\004P.dwg XREF: T:\3\3915\004\dwg\004Q.dwg XREF: T:\3\3915\004\dwg\004R.dwg XREF: T:\3\3915\004\dwg\004S.dwg XREF: T:\3\3915\004\dwg\004T.dwg XREF: T:\3\3915\004\dwg\004U.dwg XREF: T:\3\3915\004\dwg\004V.dwg XREF: T:\3\3915\004\dwg\004W.dwg XREF: T:\3\3915\004\dwg\004X.dwg XREF: T:\3\3915\004\dwg\004Y.dwg XREF: T:\3\3915\004\dwg\004Z.dwg	

STORM SEWER PROFILE

LEGEND

Existing Grade
New Grade
Granular Backfill

C602

Plot Date: Dec 07, 2009 Plot Time: 1:43pm File Name: F:\3\3915\004\dwg\C601-C602.dwg Layout: C602 By: dcc



NOTE:
STORM SEWER DATA CHART LOCATED
ON SHEET C601.

NOTE:
ALL SUBSURFACE DRAIN TILES SHALL
BE DOUBLE WALL AND SMOOTH BORE.

GENERAL NOTES

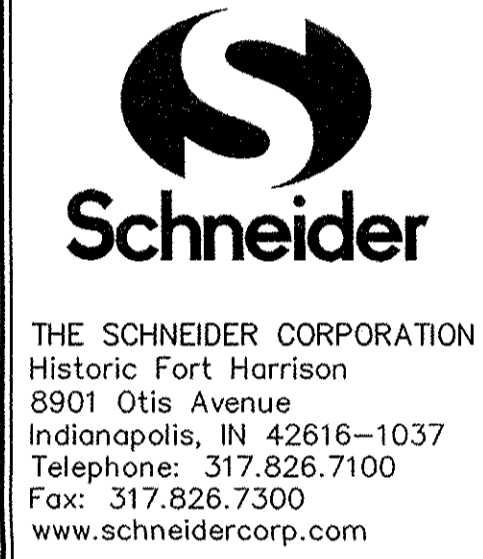
1. ALL RADIUS AND OTHER DIMENSIONS FOR 2' ROLL CURB ARE TO BACK OF CURB
2. IT SHALL BE THE RESPONSIBILITY OF EACH CONTRACTOR TO VERIFY ALL EXISTING UTILITIES AND CONDITIONS PERTAINING TO HIS PHASE OF WORK. IT SHALL ALSO BE THE CONTRACTOR'S RESPONSIBILITY TO CONTACT THE OWNERS OF THE VARIOUS UTILITIES FOR PROPER STAKE LOCATIONS FOR EACH UTILITY BEFORE WORK IS STARTED. THE CONTRACTOR SHALL NOTIFY IN WRITING THE OWNER OR THE ENGINEER OF ANY CHANGES, OMISSIONS, OR ERRORS FOUND ON THESE PLANS OR IN THE FIELD BEFORE WORK IS STARTED OR RESUMED.
3. VERIFY SIGN LOCATIONS AND SIGN REQUIREMENTS WITH LOCAL GOVERNING AUTHORITIES.
4. TEMPORARY TRAFFIC CONTROL DURING CONSTRUCTION TO CONFORM TO APPLICABLE LOCAL AND STATE STANDARDS.
5. ALL CONSTRUCTION ACTIVITY ON THIS SITE TO BE PERFORMED IN COMPLIANCE WITH APPLICABLE O.S.H.A. STANDARDS FOR WORKER SAFETY.
6. THE SIZE AND LOCATION OF EXISTING UTILITIES SHOWN AREA PER INFORMATION PROVIDED BY THE RESPECTIVE UTILITY COMPANIES. ALL UTILITY COMPANIES SHOULD BE NOTIFIED PRIOR TO ANY EXCAVATION FOR FIELD LOCATION OF SERVICES.
7. SERVICE WALKS SHALL BE CONSTRUCTED PER FIG. P-10 ON SHEET C803.
8. ROLL CURB SHALL BE DEPRESSED AT SIDEWALK INTERSECTIONS MARKED WITH HANDICAPPED RAMPS PER FIG. P-11 & P11A ON SHEET C803.
9. ALL EXISTING OFF-SITE DRAIN TILES THAT ARE ENCOUNTERED SHALL BE TIED INTO THE PROPOSED STORM SEWER SYSTEM WITH A POSITIVE OUTFLOW.

LEGEND

- - - Existing Storm Sewer
- - - New Storm Sewer
- - - Existing Sanitary Sewer
- - - New Sanitary Sewer
- - - Existing Contour
- - - New Pavement Grade
- - - All Other Finish Grades
- Storm Structure Number
- Sanitary Structure Number
- Flow Arrow
- MFPG=000.0 Denotes Approximate Home Location and Minimum Flood Protection Grade
- MFPG=000.0 ME Meet Existing Elevation
- ← Indicates Emergency Flood Routing
- MFPG=000.0 Denotes Minimum Flood Protection Grade
- - - New Subsurface Drains
- Handicapped Ramp See Fig. P-11 & P11A on Sheet C803

REVISIONS:
1. DATE: 2/27/09, REVISED PER IAC COMMENTS, 2/17/09.
2. DATE: 03/18/09, REVISED PER IAC COMMENTS, 03/18/09.
3. DATE: 05/17/09, REVISED PER IAC COMMENTS, 05/17/09.
4. DATE: 08/17/09, REVISED PER IAC COMMENTS, 08/17/09.
5. DATE: 12/00/09, REVISED PER IAC COMMENTS, 12/00/09.

DATE: 06/09/09
THIS DRAWING AND THE IDEAS, DESIGNS AND CONCEPTS CONTAINED HEREIN ARE THE EXCLUSIVE INTELLECTUAL PROPERTY OF THE SCHNEIDER CORPORATION, AND ARE NOT TO BE USED OR REPRODUCED, IN WHOLE OR IN PART, WITHOUT THE WRITTEN CONSENT OF THE SCHNEIDER CORPORATION.
© COPYRIGHTED BY THE SCHNEIDER CORP. (2009)



Architecture
Civil Engineering
Environmental Engineering
Geotechnical Services
GIS * LIS
Home Builder Services
Interior Design
Land Surveying
Landscape Architecture
Transportation Engineering

This information was gathered for input into the Hamilton County Geographic Information System (GIS). This document is considered an official record of the GIS.
Entry Date: July 2012
Entered By: SM

**SANITARY SEWER
WATER LINE
SUB-SURFACE DRAIN
STORM SEWER
RECORD DRAWING**

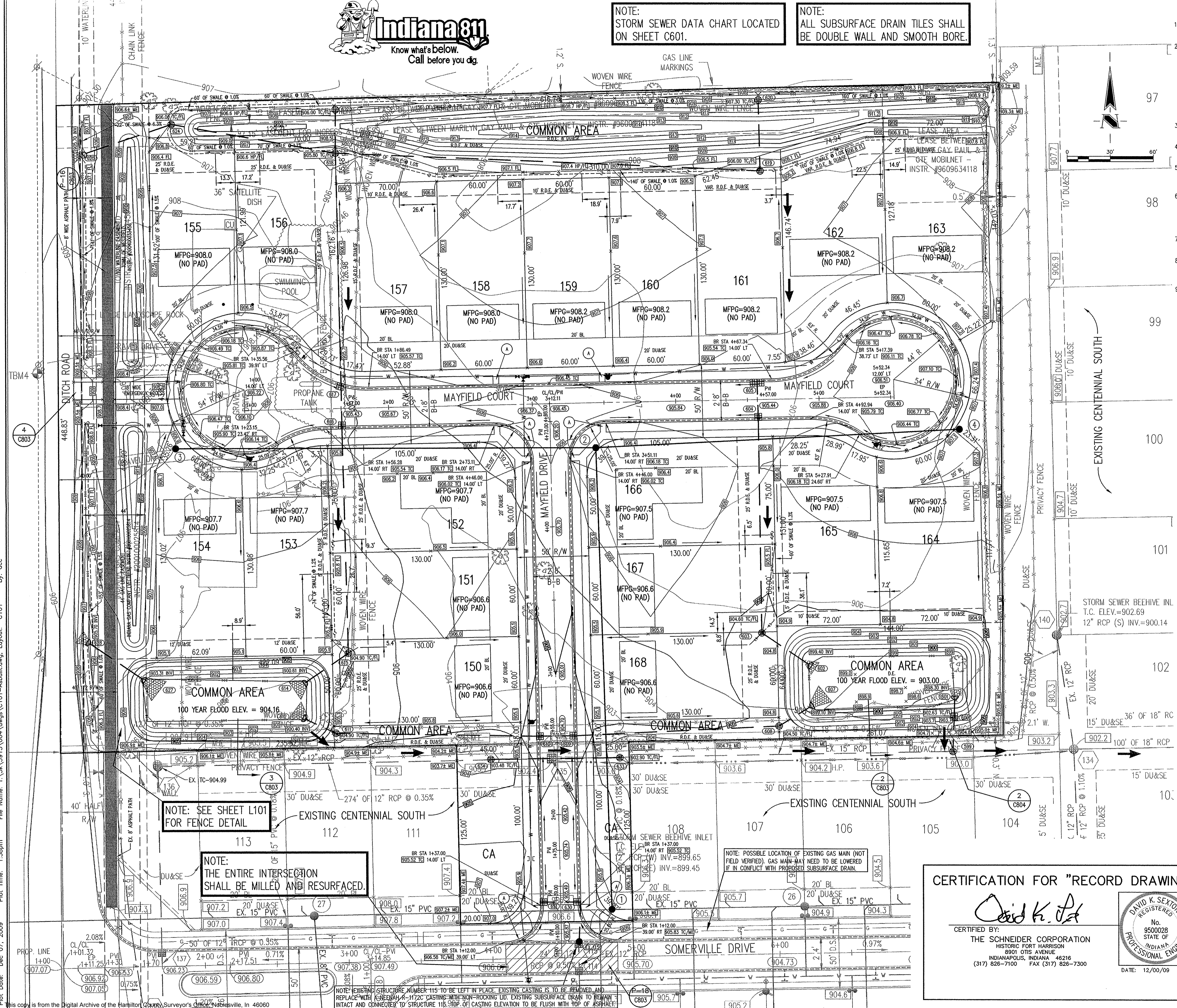
CENTENNIAL SOUTH
PHASE 2
WESTFIELD, INDIANA
ESTRIDGE DEVELOPMENT CO., INC.
CARMEL, INDIANA

CERTIFICATION FOR "RECORD DRAWING"

CERTIFIED BY:
David K. Sexton
DAVID K. SEXTON REGISTERED PROFESSIONAL ENGINEER
No. 9500028
STATE OF INDIANA
THE SCHNEIDER CORPORATION
INDIANAPOLIS, INDIANA 46216
(317) 826-7100 FAX (317) 826-7300
DATE: 12/00/09

DATE: 02/02/09 PROJECT NO.: 3915.004
DRAWN BY: DTR CHECKED BY: SMD
SHEET TITLE: DEVELOPMENT PLAN
DRAWING FILES:
T:\3\3915\004\dwg\C101-Asbuilt.dwg
XREF: T:\3\3915\004\dwg\Title.dwg
XREF: T:\3\3915\004\dwg\004BS.dwg
XREF: T:\3\3915\004\dwg\3915004s.dwg
XREF: T:\3\3915\004\dwg\004BS-Copy.dwg
XREF: T:\3\3915\004\dwg\004BS-INT.dwg
XREF: T:\3\3915\004\dwg\004BS-INT.dwg
XREF: T:\3\3915\004\dwg\004BS-INT.dwg

C101



NOTE: SEE SHEET L101 FOR FENCE DETAIL

NOTE:
THE ENTIRE INTERSECTION
SHALL BE MILLED AND RESURFACED.

NOTE: POSSIBLE LOCATION OF EXISTING GAS MAIN (NOT FIELD VERIFIED). GAS MAIN MAY NEED TO BE LOWERED IF IN CONFLICT WITH PROPOSED SUBSURFACE DRAIN.

Plot Date: Dec 07, 2009 File Name: T:\3\3915\004\dwg\C101-Asbuilt.dwg Layout: C101 By: dcc
Plot Time: 1:38pm
This copy is from the Digital Archive of the Hamilton County Surveyor's Office, Nashville, IN 46060



GENERAL NOTES

1. TEMPORARY TRAFFIC CONTROL DURING CONSTRUCTION TO CONFORM TO APPLICABLE LOCAL AND STATE STANDARDS.
2. ALL CONSTRUCTION ACTIVITY ON THIS SITE TO BE PERFORMED IN COMPLIANCE WITH APPLICABLE O.S.H.A. STANDARDS FOR WORKER SAFETY.
3. IT SHALL BE THE CONTRACTOR'S RESPONSIBILITY TO FIELD VERIFY ALL UTILITY LOCATIONS BEFORE CONSTRUCTION BEGINS.
4. CONTRACTORS SHALL MINIMIZE DAMAGE TO EXISTING TREES.

BENCHMARK

BM - U.S.G.S. 93 RHP, BRASS DISK IN A CONCRETE POST AT THE SOUTHWEST CORNER OF 146TH STREET AND DITCH ROAD. ELEVATION = 903.373 (NGVD 1929)

BM2 - CUT SQUARE ON TOP OF CONCRETE BASE AT THE NORTH SIDE OF CONCRETE FENCE POST, WEST SIDE OF DITCH ROAD, 1320± SOUTH OF 156TH STREET, ESTABLISHED FROM PREVIOUS JOB #753 (CENTENNIAL). ELEVATION = 916.99 (NGVD 1929)

BM4 - RAILROAD SPIKE SET 1.0' UP IN THE SOUTH SIDE OF A UTILITY POLE ON THE WEST SIDE OF DITCH ROAD, 267' NORTH OF THE SOUTHWEST CORNER AND 180' SOUTH OF THE NORTHWEST CORNER OF THE SUBJECT TRACT. ELEVATION = 909.51 (NGVD 1929)

REVISIONS:
 1. DIR. 2/27/09, REVISED PER THE COMMENTS, 2/17/09.
 2. DIR. 06/09/09, REVISED PER THE COMMENTS, 6/11/09.
 3. DIR. 06/09/09, REVISED PER THE COMMENTS, 6/11/09.
 4. DIR. 06/09/09, REVISED PER THE COMMENTS, 6/11/09.
 5. DIR. 06/09/09, REVISED PER THE COMMENTS, 6/11/09.

DATE: 06/09/09
 THIS DRAWING AND THE IDEAS, DESIGNS AND CONCEPTS CONTAINED HEREIN ARE THE EXCLUSIVE INTELLECTUAL PROPERTY OF THE SCHNEIDER CORPORATION, AND ARE NOT TO BE USED OR REPRODUCED, IN WHOLE OR IN PART, WITHOUT THE WRITTEN CONSENT OF THE SCHNEIDER CORPORATION.
 © COPYRIGHTED BY THE SCHNEIDER CORP. (2009)

THE SCHNEIDER CORPORATION
 Historic Fort Harrison
 8901 Otis Avenue
 Indianapolis, IN 42616-1037
 Telephone: 317.826.7100
 Fax: 317.826.7300
 www.schneidercorp.com

Architecture
 Civil Engineering
 Environmental Engineering
 Geotechnical Services
 GIS & LIS
 Home Builder Services
 Interior Design
 Land Surveying
 Landscape Architecture
 Transportation Engineering

CENTENNIAL SOUTH
 PHASE 2
 WESTFIELD, INDIANA
 ESTRIDGE DEVELOPMENT CO., INC.
 CARMEL, INDIANA

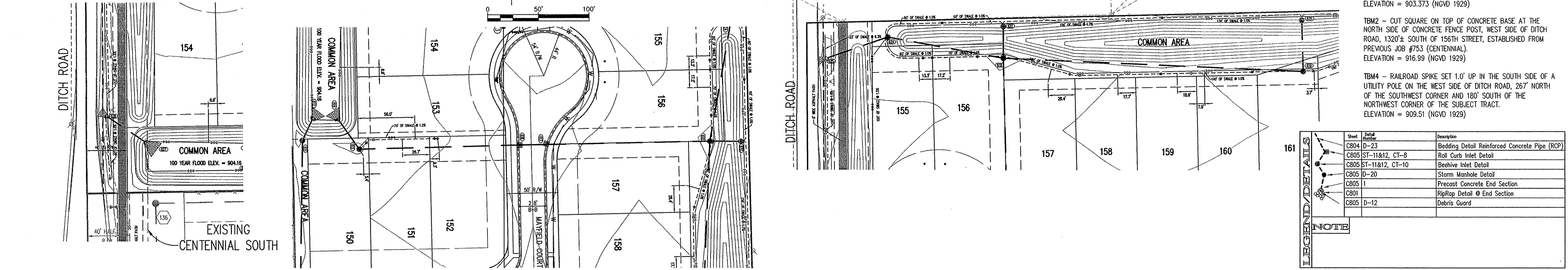
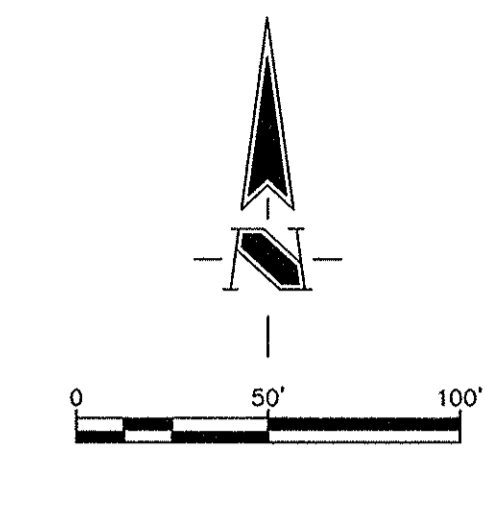
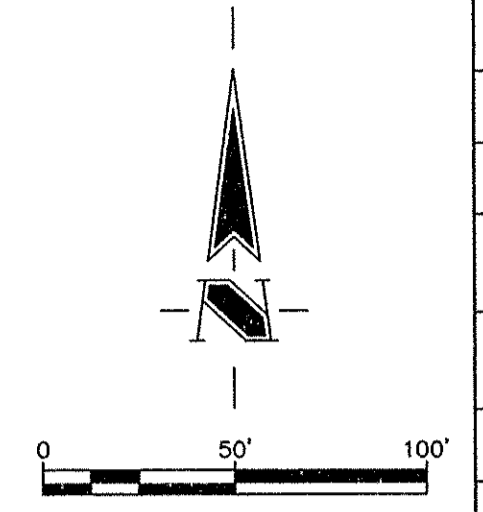
DATE: 02/02/09 PROJECT NO.: 3915.004
 DRAWN BY: DTR CHECKED BY: SMD
 SHEET TITLE: STORM SEWER PLAN & PROFILE
 DRAWING FILES:
 T:\3K\3915\004\dwg\C601-C602.dwg
 XREF: T:\3K\3915\004\dwg\C601.dwg
 XREF: T:\3K\3915\004\dwg\C602.dwg
 XREF: T:\3K\3915\004\dwg\C603.dwg
 XREF: T:\3K\3915\004\dwg\C604.dwg
 XREF: T:\3K\3915\004\dwg\C605.dwg
 XREF: T:\3K\3915\004\dwg\C606.dwg
 XREF: T:\3K\3915\004\dwg\C607.dwg
 XREF: T:\3K\3915\004\dwg\C608.dwg
 XREF: T:\3K\3915\004\dwg\C609.dwg
 XREF: T:\3K\3915\004\dwg\C610.dwg
 XREF: T:\3K\3915\004\dwg\C611.dwg
 XREF: T:\3K\3915\004\dwg\C612.dwg
 XREF: T:\3K\3915\004\dwg\C613.dwg
 XREF: T:\3K\3915\004\dwg\C614.dwg
 XREF: T:\3K\3915\004\dwg\C615.dwg
 XREF: T:\3K\3915\004\dwg\C616.dwg
 XREF: T:\3K\3915\004\dwg\C617.dwg
 XREF: T:\3K\3915\004\dwg\C618.dwg
 XREF: T:\3K\3915\004\dwg\C619.dwg
 XREF: T:\3K\3915\004\dwg\C620.dwg

STR. No.	CASTING TYPE	CASTING ELEVATION	PIPE SIZE	INVERT IN	INVERT OUT	PIPE MATERIAL
115	CURB INLET	905.79	12" (N) 12" (S)	902.69 (N)	902.49 (S)	RCP
599	BEEHIVE INLET	903.11	15" (W) 12" (N) 15" (E)	897.89 (W) 898.11 (N)	897.89 (E)	RCP
600	OUTLET CONTROL STR.	902.63	8" (NW) 12" (SE)	898.23 (NW)	898.23 (SE)	RCP
601	FLARED END SECTION	902.63	12" (NW)	898.30 (NW)	898.30 (SE)	PVC
602	FLARED END SECTION	902.63	12" (NW)	898.40 (NW)	898.40 (SE)	RCP
603	BEEHIVE INLET	904.60	12" (N) 12" (S)	900.03 (N)	899.93 (S)	RCP
604	CURB INLET	905.44	12" (N) 12" (S)	901.30 (N)	901.44 (S)	RCP
605	DOUBLE CURB INLET	905.44	12" (S)	901.30 (S)	901.44 (S)	RCP
607	FLARED END SECTION	905.44	24" (SW)	899.10 (SW)	899.10 (SW)	RCP

STR. No.	CASTING TYPE	CASTING ELEVATION	PIPE SIZE	INVERT IN	INVERT OUT	PIPE MATERIAL
608	BEEHIVE INLET	904.50	24" (W) 24" (NE)	899.17 (W)	899.17 (NE)	RCP
609	Curb Inlet	904.70	21" (W) 24" (E)	899.54 (W)	899.54 (E)	RCP
610	Curb Inlet	904.70	21" (W) 24" (E)	899.85 (W)	899.85 (E)	RCP
611	BEEHIVE INLET	904.90	18" (NW) 21" (SE)	900.25 (NW)	900.10 (SE)	RCP
612	FLARED END SECTION	904.90	18" (SE)	900.40 (SE)	900.40 (SE)	RCP
614	FLARED END SECTION	904.90	18" (NE)	900.60 (NE)	900.60 (NE)	RCP
615	BEEHIVE INLET	904.90	18" (N) 18" (SW)	900.70 (N)	900.70 (SW)	RCP

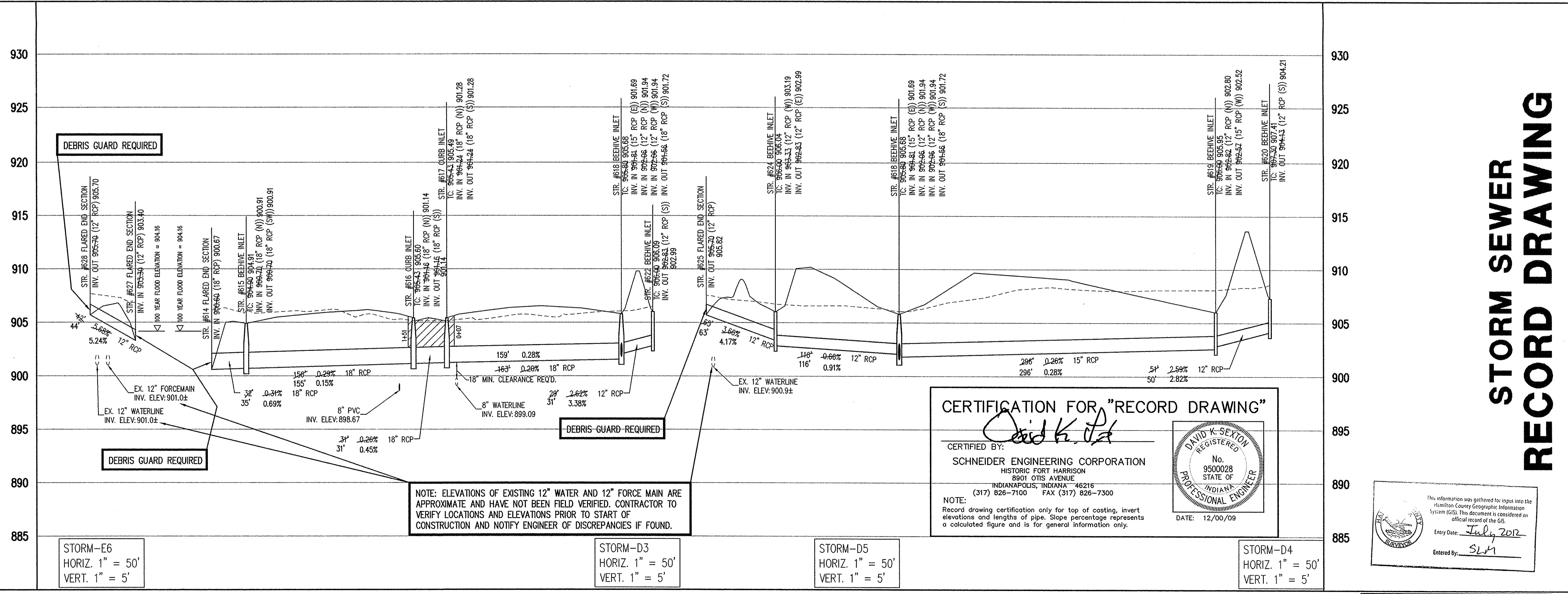
STR. No.	CASTING TYPE	CASTING ELEVATION	PIPE SIZE	INVERT IN	INVERT OUT	PIPE MATERIAL
616	Curb Inlet	905.43	18" (N) 18" (S)	901.16 (N)	901.16 (S)	RCP
617	Curb Inlet	905.43	18" (N) 18" (S)	901.24 (N)	901.24 (S)	RCP
618	BEEHIVE INLET	905.80	15" (N) 15" (W) 18" (SE)	901.81 (N) 902.06 (W) 902.06 (W)	901.56 (S)	RCP
619	BEEHIVE INLET	905.60	12" (N) 15" (W)	902.83 (N)	902.57 (W)	RCP
620	BEEHIVE INLET	907.30	12" (S)	904.13 (S)	904.13 (S)	RCP
622	Beehive Inlet	908.00	12" (S)	902.83 (S)	902.83 (S)	RCP
625	BEEHIVE INLET	908.00	12" (W) 12" (E)	903.33 (W)	902.83 (E)	RCP

STR. No.	CASTING TYPE	CASTING ELEVATION	PIPE SIZE	INVERT IN	INVERT OUT	PIPE MATERIAL
625	FLARED END SECTION	905.70	12" (E)	905.70 (E)	905.70 (E)	RCP
627	FLARED END SECTION	905.70	12" (NW)	905.30 (NW)	905.30 (NW)	RCP
628	FLARED END SECTION	905.70	(SE)	905.70 (SE)	905.70 (SE)	RCP
630	CURB INLET	905.49	12" (E) 12" (S)	902.83 (E)	902.83 (S)	RCP
631	CURB INLET	905.49	12" (E)	902.87 (E)	902.87 (E)	RCP
633	BEEHIVE INLET	902.90	15" (N) 15" (W)	899.19 (N)	899.19 (W)	RCP
634	BEEHIVE INLET	903.48	12" (W) 15" (E)	899.84 (W)	899.84 (E)	RCP



Sheet	Block	Description
C804	D-23	Bedding Detail Reinforced Concrete Pipe (RCP)
C805	ST-11&12, CT-8	Roll Curb Inlet Detail
C805	ST-11&12, CT-10	Beehive Inlet Detail
C805	D-20	Storm Manhole Detail
C805	1	Precast Concrete End Section
C801		RipRap Detail @ End Section
C805	D-12	Debris Guard

STORM SEWER PLAN



CERTIFICATION FOR "RECORD DRAWING"

CERTIFIED BY: *David K. Sexton*

SCHNEIDER ENGINEERING CORPORATION
 HISTORIC FORT HARRISON
 8901 OTIS AVENUE
 INDIANAPOLIS, INDIANA 46216
 (317) 826-7100 FAX (317) 826-7300

DATE: 12/00/09

DAVID K. SEXTON
 REGISTERED
 No. 9500028
 STATE OF INDIANA
 PROFESSIONAL ENGINEER

NOTE:
 Record drawing certification only for top of casting, invert elevations and lengths of pipe. Slope percentage represents a calculated figure and is for general information only.

This information was gathered for input into the Hamilton County Geographic Information System (GIS). This document is considered an official record of the GIS.
 Entry Date: July 2012
 Entered By: SLM

STORM-E6
 HORIZ. 1" = 50'
 VERT. 1" = 5'

STORM-D3
 HORIZ. 1" = 50'
 VERT. 1" = 5'

STORM-D5
 HORIZ. 1" = 50'
 VERT. 1" = 5'

STORM-D4
 HORIZ. 1" = 50'
 VERT. 1" = 5'

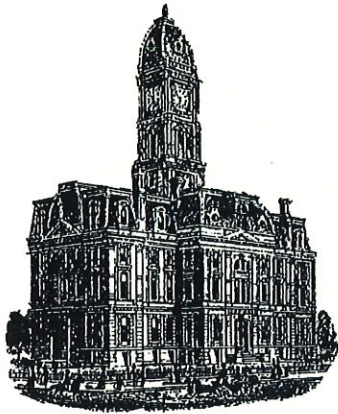
STORM SEWER PROFILE

LEGEND

	Existing Grade
	New Grade
	Granular Backfill

C601

File Name: T:\3K\3915\004\dwg\C601-C602.dwg, Layout: C601
 Plot Time: 1:42pm
 Dec 07, 2009



Kenton C. Ward, CFM
Surveyor of Hamilton County
Phone (317) 776-8495
Fax (317) 776-9628

Suite 188
One Hamilton County Square
Noblesville, Indiana 46060-2230

Map Correction-Field Verification

Drain Number: 315

Drain Length: 3431

Drain Name: Centennial South Phase 2

Change +/- : -23

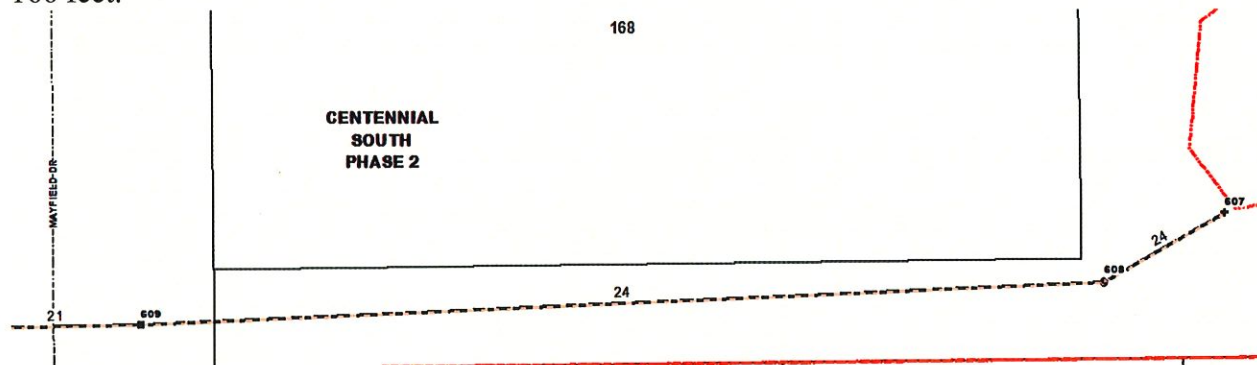
Date: 12-29-2016

New Length: 3408

Verified By: SLM

Notes & Sketch:

The 24" RCP was incorrectly reported on the final report. The total length of 24" RCP should be 166 feet.



Suzanne L. Mills
GIS Specialist